

Rocky Mountain Thunderbolt Main Pivot Bearing Retrofit Guide

Publish Date: August 18th, 2016

Rev A



Table of Contents

Materials Required.....	3
Bearing Main Pivot Assembly.....	4
1) Bearing Cup Assembly	4
2) Chain Stay Assembly	4
3) Front Triangle Assembly.....	5
4) Main Pivot Assembly	5
Bearing Main Pivot Disassembly.....	6
1) Chain Stay Removal.....	6
2) Bearing Removal.....	6

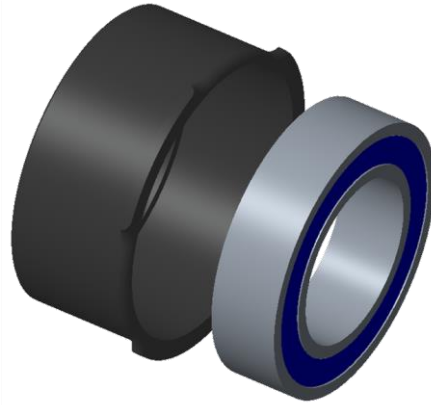
Materials Required

- Rocky Mountain Thunderbolt
 - Carbon MY 2015 - 2017
 - Aluminum MY 2016 - 2017
- Thunderbolt Main Pivot Bearing Retrofit Kit (1816513)
- Torque Wrench w/ 8mm Hex Key Bit
- 10mm Hex Key
- Small Mallet
- Vise with Soft Jaws
- 27mm OD Cylinder
- Maiden DH Toolkit (ARM6520100) (Optional)
- Blind Puller with 17mm OD Collet

Note: For instructions on Thunderbolt PipeLock disassembly, please see the 2015 Rocky Mountain Technical Manual.

Bearing Main Pivot Assembly

1) Bearing Cup Assembly

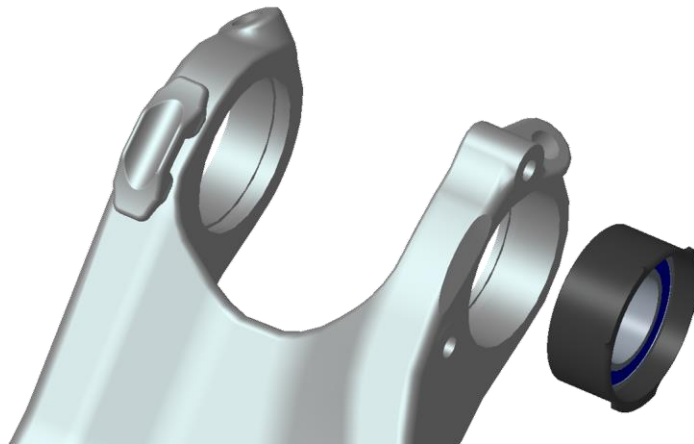


1) Lightly grease inside of Bearing Seat Sleeves (1807018).

2) Using a 27mm OD cylinder – such as a socket – and a vise with soft jaws, press Enduro MR17827 LLB Bearings (1807065) into Bearing Seat Sleeves.

3) Clean off excess grease; inspect bearing for proper insertion against seat.

2) Chain Stay Assembly



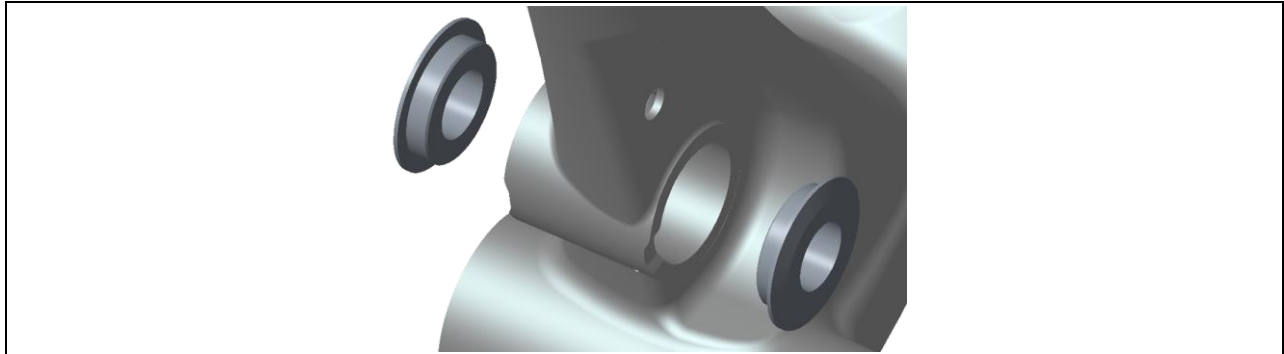
1) Orient the lobes of the Bearing Seat Sleeves as shown, so that the sleeve does not interfere with the E-Type mounting bosses.

Do not grease.

2) Using a 27mm OD cylinder – such as a socket – and a vise with soft jaws, press Bearing Seat Sleeves into chain stay.

3) Inspect Bearing Seat Sleeves for proper seating against chain stay.

3) Front Triangle Assembly

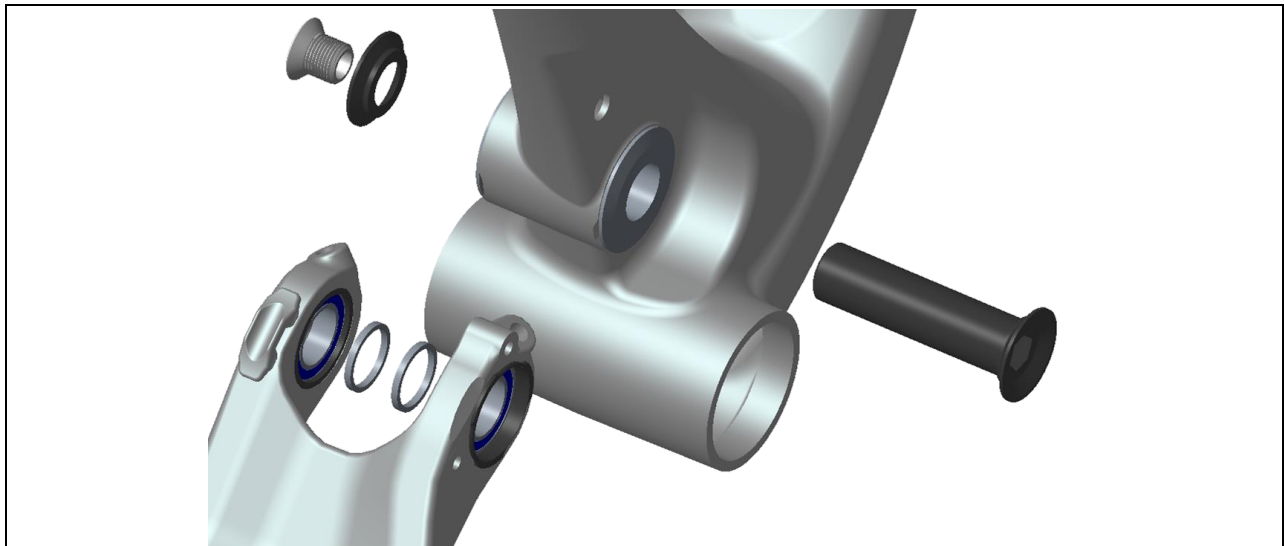


1) Using a small mallet, press in MP Adapters (1807018) into front triangle main pivot bore.

Do not grease.

2) Inspect MP Adapters; ensure they are seated flush against the front triangle.

4) Main Pivot Assembly



1) Grease Bearing Spacers (1807017) and the outside of the Thunderbolt Bearing Main Pivot Bolt (1807019).

Apply Loctite 242 (Blue) to the Main Pivot Screw (1095065).

2) Place greased Bearing Spacers against bearing inner races on the inside of the chain stay, as shown.

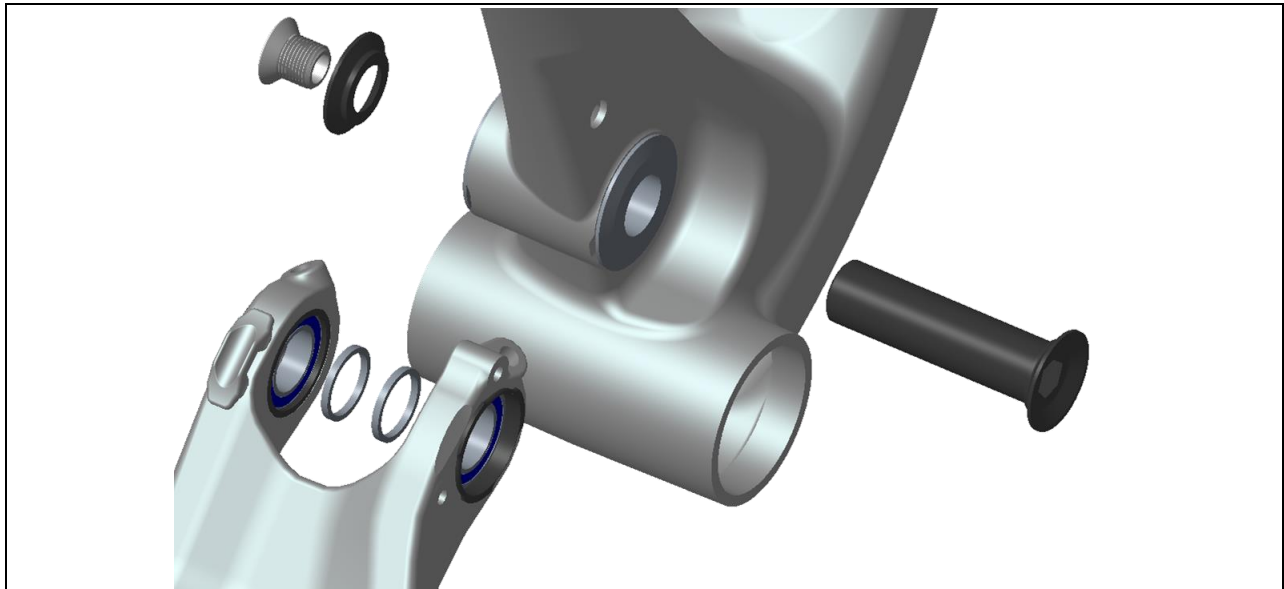
3) Slide chain stay assembly over front triangle main pivot. Insert Main Pivot Bolt.

4) Pass Main Pivot Screw through Bearing Main Pivot Washer (1807020), and thread into Main Pivot Bolt.

Torque to 17 Nm (150 lb-in).

Bearing Main Pivot Disassembly

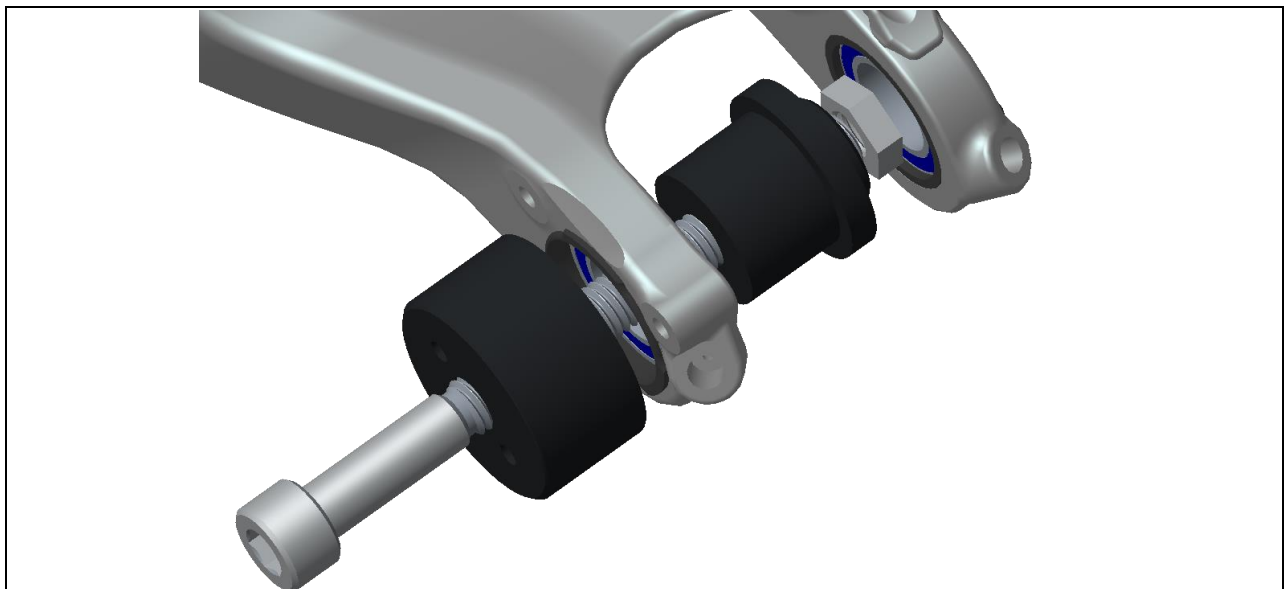
1) Chain Stay Removal



1) Undo Main Pivot Main Pivot Bolt (1807019) and Main Pivot Screw (1095065).

2) Slide chain stay off of frame, taking care not to lose Bearing Spacers (1807017).

2) Bearing Removal



1) Using 6904 Bearing Tool Press, or a Blind Puller, remove Enduro MR17827 LLB Bearings (1807065).