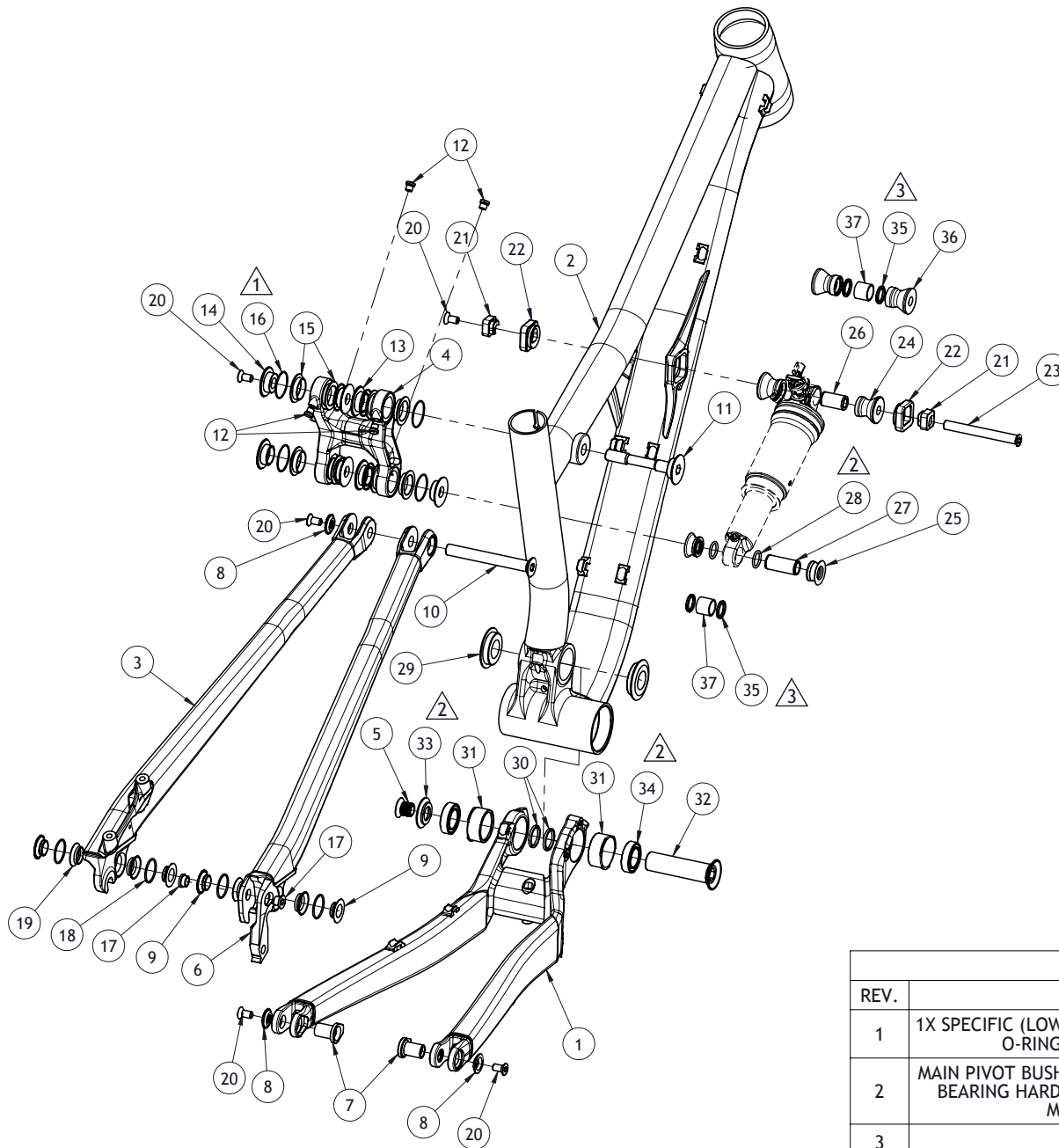


SPECIFICATIONS

Upper headset:	ZS ID 44 OD 50
Lower headset:	ZS ID 56 OD 62
Fork steer tube:	1 1/8" x 1 1/2" taper
Fork travel:	130mm
Rear shock:	7.25x1.75" (185x44mm)
Upper (or front) bushing:	56 x 8mm Custom RMB
Lower (or front) bushing:	40 x 9.9mm Custom RMB
Tire size:	26x2.35"
BB standard:	BB 92mm pressfit
Seatpost dia.:	Ø30.9mm
Seat clamp:	Ø34.9mm
Front derailleur mount:	none
Rear derailleur mount:	STANDARD
Max crank length:	175mm
Rear disc brake mount and max. rotor size:	PM 160mm direct, Ø180mm



REVISIONS			
REV.	DESCRIPTION	DATE	BY
1	1X SPECIFIC (LOW DIRECT MOUNT PLATE AND SCREW REMOVED), O-RING #21 AND 22 REPLACED BY RMB PART	2015-10-28	GL
2	MAIN PIVOT BUSHING HARDWARE ARE REPLACED BY A RETROFIT BEARING HARDWARE AND CS GREASE PORTS ARE REMOVED, MISSING O-RING ADDED #1805079	2016-02-22	GL
3	SHOCK HARDWARE ADDED	2016-06-29	GL



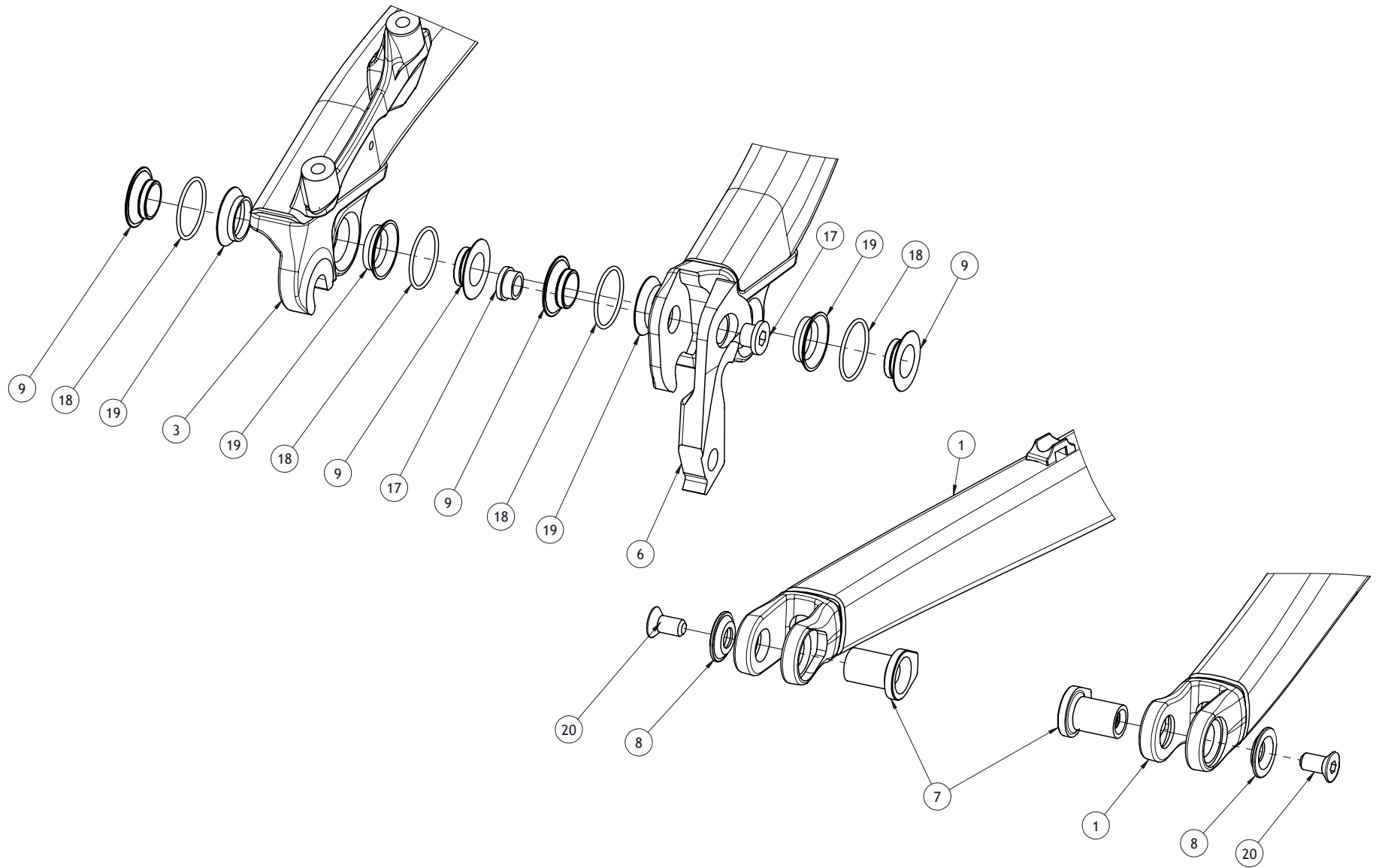
PROPRIETARY AND CONFIDENTIAL
 THE INFORMATION CONTAINED IN THIS DRAWING IS THE SOLE PROPERTY OF FACTION BIKE STUDIO. ANY REPRODUCTION IN PART OR AS A WHOLE WITHOUT THE WRITTEN PERMISSION OF FACTION BIKE STUDIO IS PROHIBITED.


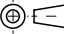
DIMENSIONS ARE IN MILLIMETERS
 TOLERANCES UNLESS OTHERWISE SPECIFIED

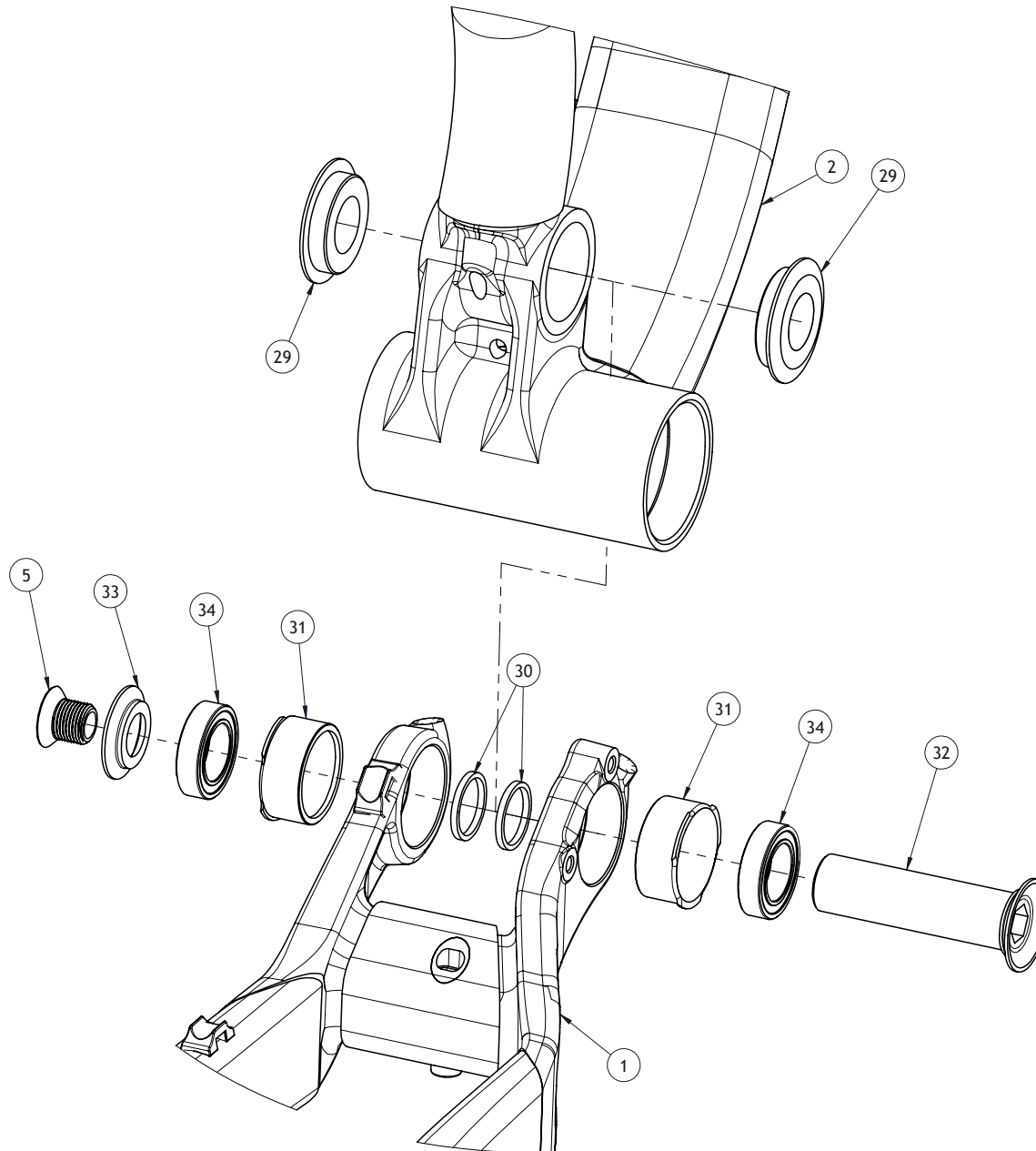
X: ±0.5
 X.X: ±0.1 ANGULAR:
 X.XX: ±0.05 X.X: ±0.5°

DO NOT SCALE DRAWING
 DEBUR AND BREAK SHARP EDGE

SURFACE FINISH	DRAWN	G LALANCETTE	DESCRIPTION 24 IN MECHANICAL ASSEMBLY
	DESIGNED	G LALANCETTE	
	CHECKED	J WESTPHAL	
MATERIAL	DATE	2015-01-16	CUSTOMER ROCKY MOUNTAIN
	SCALE: 1:6	FORMAT A	DRAWING NUMBER RMB-02-000
			REV 3



 <p>PROPRIETARY AND CONFIDENTIAL THE INFORMATION CONTAINED IN THIS DRAWING IS THE SOLE PROPERTY OF FACTION BIKE STUDIO. ANY REPRODUCTION IN PART OR AS A WHOLE WITHOUT THE WRITTEN PERMISSION OF FACTION BIKE STUDIO IS PROHIBITED.</p>	DIMENSIONS ARE IN MILLIMETERS TOLERANCES UNLESS OTHERWISE SPECIFIED <i>X: ±0.5</i> <i>X.X: ±0.1</i> <i>ANGULAR:</i> <i>X.XX: ±0.05</i> <i>X.X: ±0.5°</i>	SURFACE FINISH MATERIAL	DRAWN G LALANCETTE DESIGNED G LALANCETTE CHECKED J WESTPHAL DATE 2015-01-16 SCALE: 1:2	DESCRIPTION 24 IN MECHANICAL ASSEMBLY CUSTOMER ROCKY MOUNTAIN	DRAWING NUMBER RMB-02-000	REV 3
	DO NOT SCALE DRAWING DEBUR AND BREAK SHARP EDGE	FORMAT  A	DRAWING NUMBER RMB-02-000	REV 3		



PROPRIETARY AND CONFIDENTIAL
 THE INFORMATION CONTAINED IN THIS DRAWING IS THE SOLE PROPERTY OF FACTION BIKE STUDIO. ANY REPRODUCTION IN PART OR AS A WHOLE WITHOUT THE WRITTEN PERMISSION OF FACTION BIKE STUDIO IS PROHIBITED.

DIMENSIONS ARE IN MILLIMETERS
 TOLERANCES UNLESS OTHERWISE SPECIFIED

X: ± 0.5
 X.X: ± 0.1 ANGULAR:
 X.XX: ± 0.05 X.X: $\pm 0.5^\circ$

DO NOT SCALE DRAWING
 DEBUR AND BREAK SHARP EDGE

SURFACE FINISH

MATERIAL

DRAWN	G LALANCETTE
DESIGNED	G LALANCETTE
CHECKED	J WESTPHAL

DATE	2015-01-16
------	------------

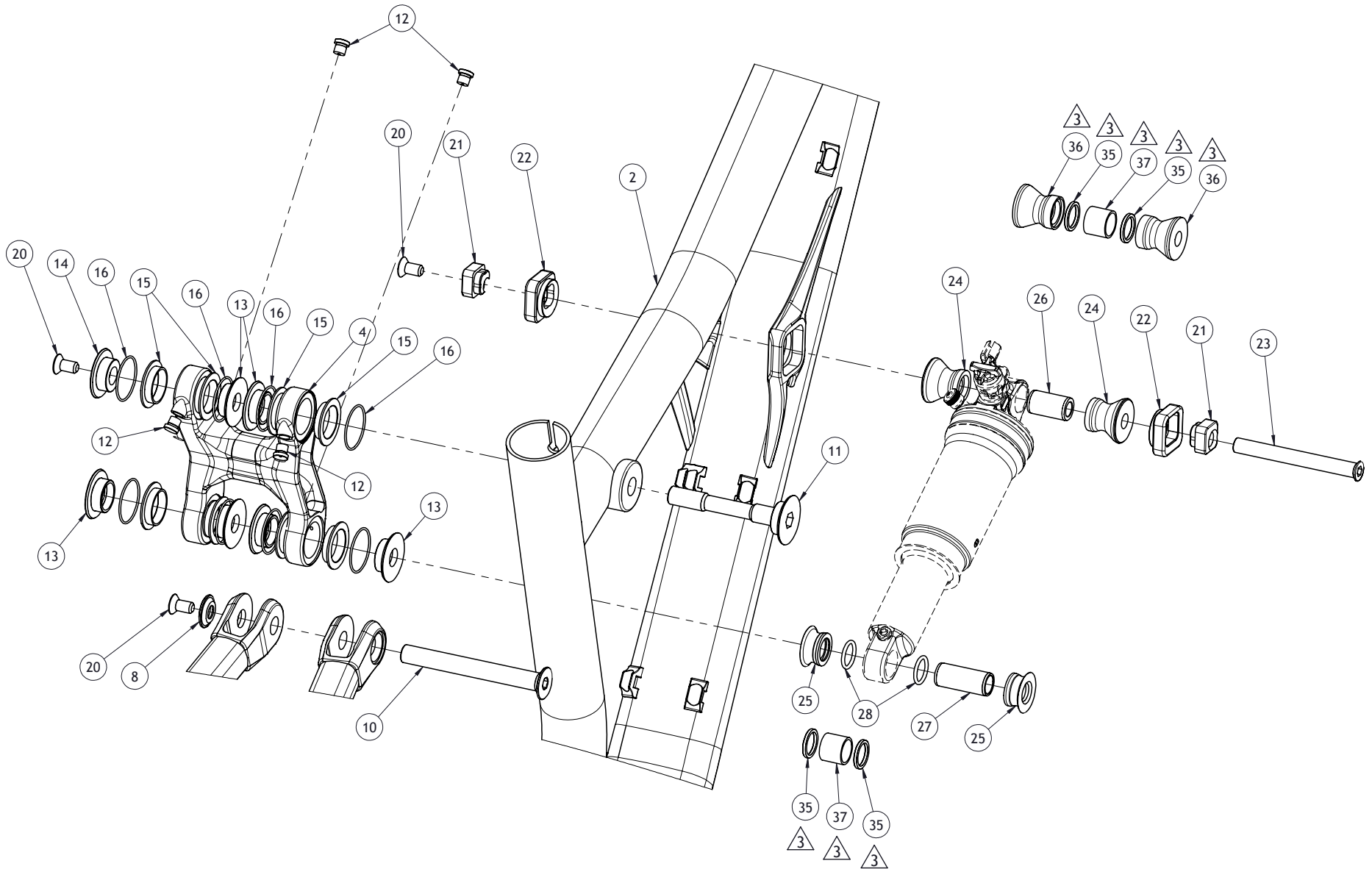
SCALE: 1:2	FORMAT A
------------	-------------

DESCRIPTION	24 IN MECHANICAL ASSEMBLY
-------------	---------------------------

CUSTOMER	ROCKY MOUNTAIN
----------	----------------

DRAWING NUMBER	RMB-02-000
----------------	-------------------

REV	3
-----	----------



PROPRIETARY AND CONFIDENTIAL
 THE INFORMATION CONTAINED IN THIS DRAWING IS THE SOLE PROPERTY OF FACTION BIKE STUDIO. ANY REPRODUCTION IN PART OR AS A WHOLE WITHOUT THE WRITTEN PERMISSION OF FACTION BIKE STUDIO IS PROHIBITED.

DIMENSIONS ARE IN MILLIMETERS
 TOLERANCES UNLESS OTHERWISE SPECIFIED

X: ±0.5
 X.X: ±0.1 ANGULAR:
 X.XX: ±0.05 X.X: ±0.5°

DO NOT SCALE DRAWING
 DEBUR AND BREAK SHARP EDGE

SURFACE FINISH

MATERIAL

DRAWN	G LALANCETTE
DESIGNED	G LALANCETTE
CHECKED	J WESTPHAL

DATE	2015-01-16
------	------------

SCALE: 1:3	FORMAT A
------------	-------------


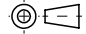
DESCRIPTION	24 IN MECHANICAL ASSEMBLY
-------------	---------------------------

CUSTOMER	ROCKY MOUNTAIN
----------	----------------

DRAWING NUMBER	RMB-02-000
----------------	------------

REV	3
-----	---

ITEM NO	PART NUMBER	DESCRIPTION	SUPPLIER	SUPPLIER PART#	SURFACE FINISH	SOURCING	TARGET WEIGHT	MATERIAL	QTY
1	RMB-01-020	WELDED CHAINSTAY ASSEMBLY	MK	S-2016-037&093-096-CS		MANUFACTURED			1
2	RMB-02-010	WELDED FRONT TRIANGLE	MK			MANUFACTURED			1
3	RMB-02-030	KID WELDED SEATSTAY ASSEMBLY	MK			MANUFACTURED			1
4	1095060	TOP LINK, 80MM LONG, 90DEG BUSHING	OVERTOP		HARD ANODIZED BLACK	PURCHASED	100.91	6061-T6	1
5	1095065	MAIN PIVOT SCREW M10	OVERTOP			PURCHASED	7.44	SS 310	1
6	1098095	QR RD HANGER	OVERTOP			PURCHASED	19.80	7075-T6	1
7	180463-021	KEY HD C'SUNK L BOLT INT M6X1.0	OVERTOP			PURCHASED	6.32	7075-T6	2
8	180476	C'SUNK WASHER	OVERTOP			PURCHASED	1.04	7075-T6	3
9	180490	ALLOY WASHER FOR ANGULAR POLY	OVERTOP			PURCHASED	1.41	7075-T6	4
10	180496	CSUNK THRU BOLT 10X85 M6	OVERTOP		HARD ANODIZED	PURCHASED	13.94	7075-T6	1
11	1805005	CSUNK HD THRU BOLT 71 TPHT ID18	OVERTOP			PURCHASED	13.17	7075-T6	1
12	1805026	MINI ZIRK GREASE PORT	HGF			PURCHASED		STEEL	4
13	1805040	WASHER TOPHAT IGUS 18	OVERTOP			PURCHASED	3.42	7075-T6	6
14	1805041	WASHER TOPHAT IGUS 18C	OVERTOP			PURCHASED	4.70	7075-T6	1
15	1805062	IGUS BUSHING J SERIE OD:20 ID:18 L:5	IGUS			PURCHASED	0.50	IGUS J3 I-GLIDE	8
16	1805080	O-RING D1.0 ID23MM	OVERTOP			PURCHASED		BUNA-N	8
17	180510	CHAINRING BOLT M8X0.75X5MM W 4MM LONG NUT	OVERTOP			PURCHASED	4.54	SS	1
18	180543	O-RING D:1.25 ID:20MM	OVERTOP			PURCHASED		BUNA-N	4
19	1805444	IGUS ANGULAR CONTACT BEARING	IGUS			PURCHASED	0.33	IGUS J3 I-GLIDE	4
20	180566-012	FLAT HEAD C'SUNK SOCKET HEAD M6X1.0 X 12MM	OVERTOP	180566-012		PURCHASED	3.19	SS 316	5
21	180628	FLIP CHIP INSIDE	OVERTOP		BLACK ANODIZED	PURCHASED	3.91	7075-T6	2
22	180629	FLIP CHIP OUTSIE	OVERTOP		BLACK ANODIZED	PURCHASED	8.13	7075-T6	2
23	180630	CUSTOM FLAT BOLT 8MM X 60MM M6	OVERTOP			PURCHASED	27.44	SS 310	1
24	180631	SHOCK REDUCER FOX IGUS	OVERTOP			PURCHASED	11.65	7075-T6	2
25	180684	2015 THUNDERBOLT REAR SHOCK REDUCER 30MM PIN	OVERTOP			PURCHASED	3.19	7075-T6	2
26	SHOCK_PIN_8X22-2	SHOCK PIN ID:8 X 22.2MM LONG	OVERTOP			PURCHASED	13.47	SS 310	1
27	SHOCK_PIN_10X29-9	SHOCK PIN ID:10 X 29.9MM LONG	OVERTOP			PURCHASED	11.42	SS 310	1
28	1805079	O-RING D:1.78 ID:12.42MM	OVERTOP			PURCHASED		BLACK NITRILE RUBBER	2
29	1807016	THUNDERBOLT MP BORE ADAPTER, OD:17 BOLT	OVERTOP		HARD BLACK ANODIZED	PURCHASED	11.98	7075-T6	2
30	1807017	BEARING SPACER, ID:17, OD:20, L:2	OVERTOP		HARD BLACK ANODIZED	PURCHASED	0.48	7075-T6	2
31	1807018	THUNDERBOLT MP BEARING SEAT SLEEVE, FOR OD:28 BRGS	OVERTOP		HARD BLACK ANODIZED	PURCHASED	3.88	7075-T6	2
32	1807019	MP BOLT FOR BRG RETROFIT, OD:17, L:66, INT. M12X1	OVERTOP		HARD BLACK ANODIZED	PURCHASED	19.46	7075-T6	1
33	1807020	THUNDERBOLT BRG MP CAP, C'SUNK, 017	OVERTOP		HARD BLACK ANODIZED	PURCHASED	2.15	7075-T6	1
34	1807065	ENDURO MR 17287 LLB SINGLE ROW BEARING 28X17X7	ENDURO BEARINGS			PURCHASED	13.6	CHROME STEEL	2
35	180522	RUBBER O-RING, FOR 12.7mm FOX SHOCK PIN				PURCHASED	0.18	RUBBER	4
36	3113003	SHOCK REDUCER, STD.- FOR ID:8, OD:12.7 x 22.2mm PIN; 56mm OUTER SPAN				PURCHASED	11.94	7075-T6	2
37		SHOCK BUSHING, ID:12.7mm, OD:15mm, L:12.7mm				PURCHASED	4.99	STEEL	2

 <p>FactionBike studio</p> <p>PROPRIETARY AND CONFIDENTIAL</p> <p>THE INFORMATION CONTAINED IN THIS DRAWING IS THE SOLE PROPERTY OF FACTION BIKE STUDIO. ANY REPRODUCTION IN PART OR AS A WHOLE WITHOUT THE WRITTEN PERMISSION OF FACTION BIKE STUDIO IS PROHIBITED.</p>	<p>DIMENSIONS ARE IN MILLIMETERS TOLERANCES UNLESS OTHERWISE SPECIFIED</p> <p>X: ±0.5 X.X: ±0.1 X.XX: ±0.05</p> <p>ANGULAR: X.X: ±0.5°</p> <p>DO NOT SCALE DRAWING DEBUR AND BREAK SHARP EDGE</p>	SURFACE FINISH		DRAWN G LALANCETTE		DESCRIPTION			
				DESIGNED G LALANCETTE		24 IN MECHANICAL ASSEMBLY			
				CHECKED J WESTPHAL		DATE		CUSTOMER	
						2015-01-16		ROCKY MOUNTAIN	
		MATERIAL		 SCALE: 1:6		FORMAT A		DRAWING NUMBER	
						RMB-02-000		REV	
								3	