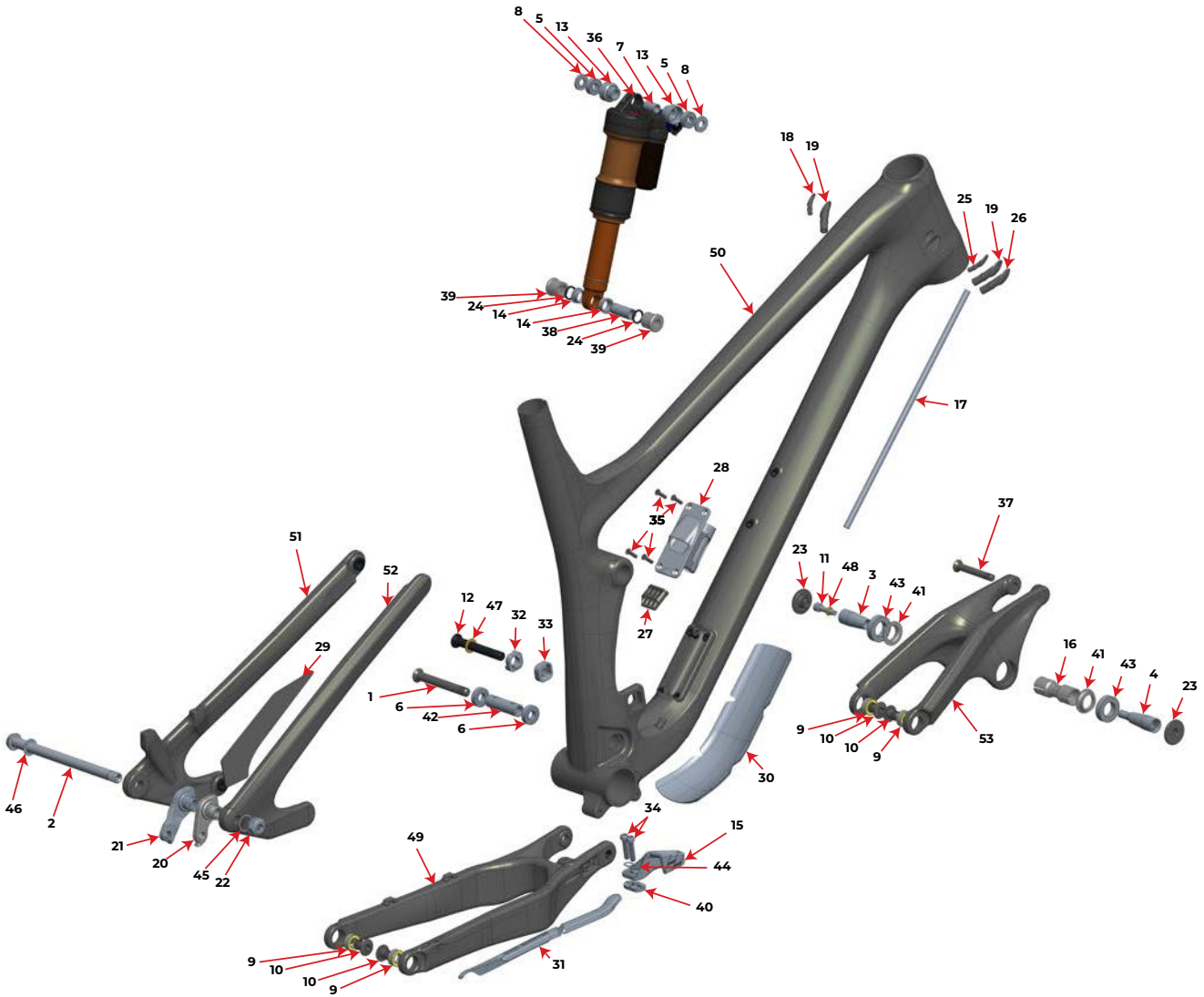


MY19 MY18 MY17

Slayer Carbon



2019_2018_2017 Slayer Carbon

EVP/PV

#	QTY	ITEM	PART NO.	REVISION	DESCRIPTION
<hr/>					
			1817011		Axle kit
46	1	WASHER	3227006	B	WASHER, 12x19x0.5MM, 304 SS
2	1	AXLE, REAR	3227009	C	REAR AXLE 12X 173MM, HARD BLACK ANO
<hr/>					
			1817012		bearing kit
6	2	BEARING	1807042	NIL	ENDURO BEARING 6900 2RS MAX TYPE, 22X10X6 SIZE
43	2	TOP LINK BEARING	1807112	NIL	BEARING 6903 LLU MAX 17MM*30MM*7MM
9	4	BEARING, DR 11197	1807034	NIL	Slayer Rear pivots bearing, DR 11197 LLU MAX, ENDURO
<hr/>					
			1817013		SLAYER protector kit
29	1	PROTECTOR	3707004	NIL	SLAYER SEATSTAY PROTECTOR
30	1	PROTECTOR	3708034	NIL	SLAYER DOWNTUBE PROTECTOR
31	1	PROTECTOR	3708037	NIL	SLAYER CHAINSTAY PROTECTOR
<hr/>					
			1817014		Di2 Panel kit
28	1	PORT COVER	1097023	G	SHIM. DI2 PORT SLYR. COVER PLATE, PLASTIC
35	4	SCREW, M4X16 ALU	1806013	NIL	C'SUNK SOCKET SCREW, M4x16mm, AL6061-T6, HARD BLACK ANO
27	1	PLUG, DI2 PORT CVR.	1097021	A	CABLE 4-HOLE THROUGH PLUG, RUBBER
<hr/>					
			1398002		SPIRIT GUIDE KIT
15	1	CHAIN GUIDE	3398001	A	CHAIN GUIDE
34	2	SCREW	1807132	NIL	M6-1.0, 25MM LONG, SOCKET HEAD
40	3	SPACER	3398002	A	CHAIN GUIDE SPACER
44	1	WASHER	1807133	NIL	CHAIN GUIDE WASHER
<hr/>					
			1817016		bearing eyelet kit
8	2	BEARING SPACER	1807027	C	EYELET BEARING SPACER, 2.8MM THK, FOR 35MM LINK WIDTH
5	2	BEARING	1807036	NIL	ENDURO 698 LLU MAX 19X8X6
13	2	BRG CUP	1807026	E	BEARING EYELET FOR SR 19X8X6 BRG
7	1	BEARING SLEEVE	1807028	A	BEARING EYELET SLEEVE FOR SR 19X8X6 CUP
<hr/>					
			1819017		Slayer Link with Bearings
53	1	~ FRAME ~ TOP LINK	1097020	NIL	SLAYER TOP LINK, CARBON
41	2	SPACER TOP LINK	1806093	B	MAIN PIVOT BEARING SPCR., AL7075-T6, HARD BLACK ANODIZE
43	2	TOP LINK BEARING	1807112	NIL	BEARING 6903 LLU MAX 17MM*30MM*7MM
9	2	BEARING, DR 11197	1807034	NIL	Slayer Rear pivots bearing, DR 11197 LLU MAX, ENDURO
<hr/>					
			1819018		SLAYER PIVOT BOLT KIT
37	1	SHOCK, 8MM BOLT	1807037	A	Upper Shock bolt, 8mm OD x XLmm. Steel w. black plate.
23	2	NUT, TP LOCK	1806087	A	TOP PIVOT LOCKNUT M12X1, AL7075-T6, HARD BLACK ANO.
11	1	BOLT, M6X25	1807039	NIL	SOCKET HEAD CAP SCREW; M6X25
48	1	WASHER, BRASS	1807069	NIL	BRASS WASHER, 10OD X 6ID X 1.5T
3	1	AXLE, TP LEFT	1806088	A	17MM TOP PIVOT AXLE, LEFT, AL7075-T6.
4	1	AXLE, TP RIGHT	1806089	A	17MM TOP PIVOT AXLE, RIGHT, AL7075-T6
16	1	COLLET, T.P.	1806090	E	TOP PIVOT COLLET, AL7005-T6, HARD BLACK ANODIZE
10	4	BOLT, 11MM AXLE	1807035	NIL	Rear pivots 11mmODx1.0 x 16L Axle, AL7075-t6, Hard Black ano
1	1	AXLE, MP	1807029	A	MP AXLE, M10X1.25, L:84mm, AL7075-T6 HARD BLACK ANO
42	1	SPACER, MP	1807038	B	MAIN PIVOT CENTER SPACER, ID:10, L:48
12	1	BOLT, SHOCK BOT	1807024	A	Lower Shock bolt, 10mm OD x 75MML. AL7075-T6 Black ano
47	1	WASHER, BRASS	1806011	NIL	BRASS WASHER, 16.5OD X 11ID X 1.5T
39	2	SHOCK, REDUCER	1807102	NIL	SLAYER BOT. SHOCK REDUCER, FOR ID:10, OD:12.7 x 30mm PIN
<hr/>					
			1818012		HANGER KIT SHIMANO DIRECT MOUNT
21	1	HANGER	1099041	NIL	REAR DER. HANGER, EXT THREAD, SHIMANO DIRECT MOUNT
22	1	HANGER NUT	1099033	NIL	HANGER NUT, M16X1, 8MM HEX
45	1	WASHER	1808029	NIL	WASHER, 16x20x0.5MM, 304 SS
<hr/>					
			1818013		KIT STANDARD HANGER
20	1	HANGER	1099031	A	REAR DER. HANGER, EXT THREAD, STD MOUNT
22	1	HANGER NUT	1099033	NIL	HANGER NUT, M16X1, 8MM HEX
45	1	WASHER	1808029	NIL	WASHER, 16x20x0.5MM, 304 SS
<hr/>					
			1819019		RIDE 4 FLIP CHIP KIT
32	1	RIDE-4 CHIP, NO THRD.	1807040	NIL	RIDE-4 CHIP, NO THREAD, SHORT, AL6061-T6 HARD BLACK ANO
33	1	RIDE-4 CHIP, THREADED	1807041	NIL	RIDE-4 CHIP, THREADED, SHORT, AL6061-T6 HARD BLACK ANO
<hr/>					
			1819020		SLAYER GROMMET & PLUGS KIT
18	1	GROMMET	1095058	NIL	CABLE PORT RUBBER GROMMET, DI2.
19	2	GROMMET	1097027	A	CABLE PORT GROMMET, HOSE OR HOUSING, SPLIT, RUBBER
26	1	PLUG	1095088	A	CABLE PORT RUBBER PLUG FOR OVERSIZED 9MM ENTRY THRU-PORT

Sold as a kit only. Individual part not sold separately